



Infield Hydraulic Hose Repair Kits

CANGLOBAL



Canglobal (M) Sdn Bhd

63-1 Jalan 45/26 Taman Sri Rampai 53300 Kuala Lumpur Malaysia

Phone: 1-700-816-546 or +603-4025-5011

E-mail: info@canglobalcanada.ca

Website: www.canglobalcanada.ca

Contents

1. What is Hosepatch Hydraulic Hose Repair Kit?.....	3
2. Two Ways to use Hosepatch clamps and joiner.....	4
3. Hosepatch clamps and joiner after repair.....	5
4. Advantages of Hosepatch.....	6
5. Frequently asked questions.....	7-9
6. Hosepatch assembly as a patch.....	10
7. Hosepatch assembly as a joiner.....	11&12
8. Industries that would benefit from using the Hosepatch kit....	13&14



Canglobal (M) Sdn Bhd

63-1 Jalan 45/26 Taman Sri Rampai, 53300 Kuala Lumpur Malaysia

Phone: 1-700-816-546 or +603-4025-5011

E-mail: info@canglobalcanada.ca

Website: www.canglobalcanada.ca

What is Hosepatch Hydraulic Hose Repair Kit?

3

Our infield hydraulic hose repair kits are designed as a temporary repair for hydraulic hoses. The innovative product can be assembled easily and is designed to reduce downtime from hours to even days. The clamps are made from high quality 316 cast stainless steel and grade 8 bolts. The clamps can be used as a patch for low pressure applications or for more robust repair, cut the hose, insert the barb and fit the clamp and use as a joiner. The clamps and joining barb are reusable. It's a one-time investment that will save time and money for years to come.



Canglobal (M) Sdn Bhd

63-1 Jalan 45/26 Taman Sri Rampai 53300 Kula Lumpur Malaysia

Phone: 1-700-816-546 or +603-4025-5011

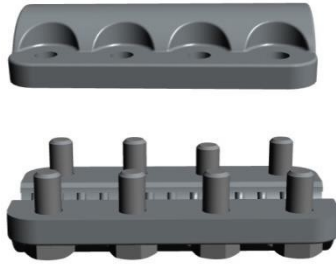
E-mail: info@canglobalcanada.ca

Website: www.canglobalcanada.ca

#1 AS A PATCH

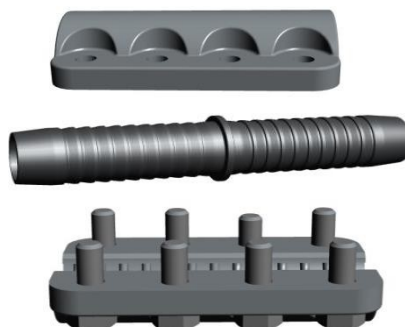
The clamp can be used as a patch for simple repairs, where the hose is in relatively good condition and for low pressure applications, less than 2000PSI (160 Bar)

Place the clamp over the hole, making sure the hole is in the centre of the clamp. Tighten the bolts as per the operator's manual. You're ready to go. To use as a patch, you will need a 12mm spanner



#2 AS A JOINER

The clamp and joiner can be used for more robust repair. The advantages of using as a joiner is that the condition of the hose isn't important, and it can be used for high pressure applications, up to 6000PSI (480 Bar). The hose has to be cut and then the joining barb is inserted, and the clamp is fitted, making sure the centre of the joining barb is in the centre of the clamp. The bolts are tightened and you're ready to go. To use as a joiner, you will need a cutting device and a 12mm spanner.



Canglobal (M) Sdn Bhd

63-1 Jalan 45/26 Taman Sri Rampai 53300 Kuala Lumpur Malaysia

Phone: 1-700-816-546 or +603-4025-5011

E-mail: info@canglobalcanada.ca

Website: www.canglobalcanada.ca

AFTER REPAIR

Hose Patch clamps are designed as a temporary repair only. It is best to replace the hose as soon as reasonably practical. Either visit your nearest hydraulic hose crimping business or visit www.hosepatch.com. Go to hydraulic hoses made to order and we will send your new hose promptly. Alternatively visit Hosepatch.com, go to our distributor's page and select either instore repair or mobile repair. Once your new hose arrives, take off the Hose Patch clamps and inspect the clamps, joining barb and bolts, making sure they are in sound condition. Place back into the kit for next use.



Canglobal (M) Sdn Bhd

63-1 Jalan 45/26 Taman Sri Rampai 53300 Kuala Lumpur Malaysia
Phone: 1-700-816-546 or +603-4025-5011
E-mail: info@canglobalcanada.ca
Website: www.canglobalcanada.ca

ADVANTAGES OF HOSEPATCH

6

**WON THE NEW RELEASE AWARD
AT NEWDEGATE FIELD DAY 2017**

**WAGIN WOOLORAMA 2018
NEW RELEASE AWARD RUNNER UP**

**FITS MOST TYPES OF
HYDRAULIC HOSES
REDUCES DOWNTIME**

COST EFFECTIVE

**QUICK AND EASY TO
ASSEMBLE**

**COMPLETELY
REUSABLE**

**IT'S A ONE TIME
INVESTMENT**



Canglobal (M) Sdn Bhd

63-1 Jalan 45/26 Taman Sri Rampai 53300 Kuala Lumpur Malaysia

Phone: 1-700-816-546 or +603-4025-5011

E-mail: info@canglobalcanada.ca

Website: www.canglobalcanada.ca

WHAT IS THE HOSEPATCH CLAMP AND JOINER?

The Hosepatch clamp and joiner is a temporary fix as either a low-pressure patch, or as a joiner to continue operation until a replacement hose can be acquired. The clamp and joiner are made from high quality 316 stainless steel with grade 8 bolts

WHAT IS THE MAXIMUM PRESSURE THE CLAMP CAN HOLD AS A PATCH?

The clamp should only be used as a patch for lower pressure application, <2000PSI. (160 Bar). The effectiveness when used as a patch can vary due to factors like hose condition and outside diameter. When used as a patch, it will never increase the extent of a leak; at the very least it will restrict it.

WHAT IS THE MAXIMUM PRESSURE USING THE CLAMP AS A JOINER?

The maximum pressure using as a joiner is 6000 PSI, all hoses were tested to 1.5 times the working pressure of the hose which meets international standards for new hose assemblies. The joiner and clamp were tested up to 15000PSI to see at which point the joiner and clamp would burst. We were amazed by the results, the JIC fittings were failing before the joiner and patch, which was a great success, through all our testing the joiner and patch never burst. We only exceeded the working pressure of the hose for testing purposes; never exceed the maximum pressure of 6000PSI.

HOW DOES HOSEPATCH CLAMP AND JOINER WORK?

If using on low pressure applications, place the clamp over the centre of the hole, tighten the bolts as per the operator's manual. You will need a 12mm socket spanner to tighten the bolts. Start operation and move machinery back to a safe location to be worked on. For high pressure applications, use as a joiner. Cut the hose, insert the joiner and place clamp over the centre of the joiner. Please follow the operator's manual for full instructions. You will need a cutting device to cut the hose and a 12mm socket spanner to tighten the bolts. It is quick and easy to apply the clamp and joiner and takes less than 10 minutes, saving on hours of downtime. Order a new hose as soon as reasonably practical.



Canglobal (M) Sdn Bhd

63-1 Jalan 45/26 Taman Sri Rampai 53300 Kuala Lumpur Malaysia

Phone: 1-700-816-546 or +603-4025-5011

E-mail: info@canglobalcanada.ca

Website: www.canglobalcanada.ca

FREQUENTLY ASKED QUESTIONS:

8

WHAT TYPE OF HOSES HAS THE HOSEPATCH CLAMP AND JOINER BEEN TESTED ON?

We have tested on 1sn (1 wire braid), 2sn (2 wire braid), R12 (4 spiral, 4000psi rated), R15 (4 spiral, 6000psi rated) and R7 Thermoplastic. As a patch, the clamp can be used on 2sn, R12 and R15 Hoses. As a joiner it can be used on all the above hoses, passing all testing standards. Unfortunately, we can't test on every hose out there, so cannot guarantee success on every hose made.

CAN THE HOSEPATCH CLAMP AND JOINER BE USED FOR FUEL LINES OR BRAKE LINES?

The Hosepatch clamp and joiner's primary use is for Hydraulic hoses and therefore all our testing has been aimed at hydraulics. We cannot recommend using them on fuel or brake lines.

WHAT SIZE CLAMPS AND JOINERS DOES THE KIT CONTAIN?

The kit contains ¼" ½" 3/8" ¾" and 1" clamp and joiner. The size of the clamp and joiner relates to the inside diameter of the hose.

Please note 1 ¼", 1 ½" and 2" are in progress and will be released within the coming months.

WHAT ARE THE BENEFITS OF USING HOSEPATCH CLAMP AND JOINER?

Using the Hosepatch clamp and joiner can save hours, if not days of downtime while a new hose is acquired. No more frustration and having to stop working, you can keep moving whilst your new hose is being crimped. The clamp and joiner are quick and easy to assemble and you need very few tools, taking less than 10 minutes to get you back up and working and able to get out of tricky situations, you can simply apply the clamp and move your machinery back to the workshop or shed, ready to be worked on. The clamps and joiner are completely reusable, so it's a one off investment.



Canglobal (M) Sdn Bhd

63-1 Jalan 45/26 Taman Sri Rampai 53300 Kuala Lumpur Malaysia

Phone: 1-700-816-546 or +603-4025-5011

E-mail: info@canglobalcanada.ca

Website: www.canglobalcanada.ca

FREQUENTLY ASKED QUESTIONS:

9

WHAT ARE THE LIMITATIONS OF HOSEPATCH CLAMP AND JOINER?

We have tested on 1sn, 2sn, R12, R5 and thermoplastic hoses, which are some of the most commonly used hydraulic hoses, however there may be limitations to certain hoses, due to material of the hose, outside diameter of the hose and unforeseen circumstance. As a patch, it cannot be used on thermoplastic hoses but can be used as a joiner. We strongly recommend not using the clamp on the hoses connecting the pump to the control valve due to the inability to quickly shut down the pressure to the hose.

WHERE CAN I PURCHASE A HOSEPATCH KIT?

You can purchase a Hosepatch Kit from our website www.hosepatch.com or visit your nearest distributor. A list of distributors is on page 13 & 14.



Canglobal (M) Sdn Bhd

63-1 Jalan 45/26 Taman Sri Rampai 53300 Kuala Lumpur Malaysia

Phone: 1-700-816-546 or +603-4025-5011

E-mail: info@canglobalcanada.ca

Website: www.canglobalcanada.ca

HOSEPATCH ASSEMBLY AS A PATCH.

10



1. Place clamp over leak.



2. Ensure the leak is in the center of the clamp.



3. Finger tighten the bolts



4. You will need a 12mm socket spanner to tighten the bolts.



5. Tighten the bolts evenly as per the operator's manual (40Nm).



6. Start operation. Order your new hose when reasonably practical.



Canglobal (M) Sdn Bhd

63-1 Jalan 45/26 Taman Sri Rampai 53300 Kuala Lumpur Malaysia

Phone: 1-700-816-546 or +603-4025-5011

E-mail: info@canglobalcanada.ca

Website: www.canglobalcanada.ca

HOSEPATCH ASSEMBLY AS A JOINER.

11



1. Cut hose center of the leak.



2. Insert joining barb.



3. Join hoses to the center of the joining barb.



4. Ensure clamp is in the center of the joining barb.



5. Finger tighten bolts.



6. You will need a 12mm socket spanner to tighten bolts, tighten bolts evenly.



Canglobal (M) Sdn Bhd

63-1 Jalan 45/26 Taman Sri Rampai 53300 Kuala Lumpur Malaysia

Phone: 1-700-816-546 or +603-4025-5011

E-mail: info@canglobalcanada.ca

Website: www.canglobalcanada.ca

HOSEPATCH ASSEMBLY AS A JOINER.



7. Tighten the bolts as per operator's manual (40Nm)



8. Continue operation until a replacement hose can be acquired

THE MAXIMUM PRESSURE USING AS A JOINER IS 6000 PSI (480 BAR).

**ALL TEST RESULTS
ARE AVAILABLE
ON REQUEST**

For more information, videos and samples, please contact us by email or visit our Facebook page Hose Patch. Alternatively visit our website www.hosepatch.com



Canglobal (M) Sdn Bhd

63-1 Jalan 45/26 Taman Sri Rampai 53300 Kuala Lumpur Malaysia

Phone: 1-700-816-546 or +603-4025-5011

E-mail: info@canglobalcanada.ca

Website: www.canglobalcanada.ca

INDUSTRIES THAT WOULD BENEFIT FROM USING THE HOSEPATCH KIT

AGRICULTURE



TRANSPORTATION



ROAD WORKS



Canglobal (M) Sdn Bhd

63-1 Jalan 45/26 Taman Sri Rampai 53300 Kuala Lumpur Malaysia

Phone: 1-700-816-546 or +603-4025-5011

E-mail: info@canglobalcanada.ca

Website: www.canglobalcanada.ca

INDUSTRIES THAT WOULD BENEFIT FROM USING THE HOSEPATCH KIT

MINING



FORESTRY



MARINE



CONSTRUCTION



EARTH MOVER



Canglobal (M) Sdn Bhd

63-1 Jalan 45/26 Taman Sri Rampai 53300 Kuala Lumpur Malaysia

Phone: 1-700-816-546 or +603-4025-5011

E-mail: info@canglobalcanada.ca

Website: www.canglobalcanada.ca